



REGIONE PUGLIA
PROGRAMMA INTEGRATO DI RIQUALIFICAZIONE DELLE PERIFERIE
"LA LOGGIA DELLE PUGLIE"
COMUNE DI SANT'AGATA DI PUGLIA

PROGETTO ESECUTIVO

Opere di urbanizzazione primaria

ABILITA' - ASCENSORE INCLINATO

carpenteria modulo 1
EGtc2.8

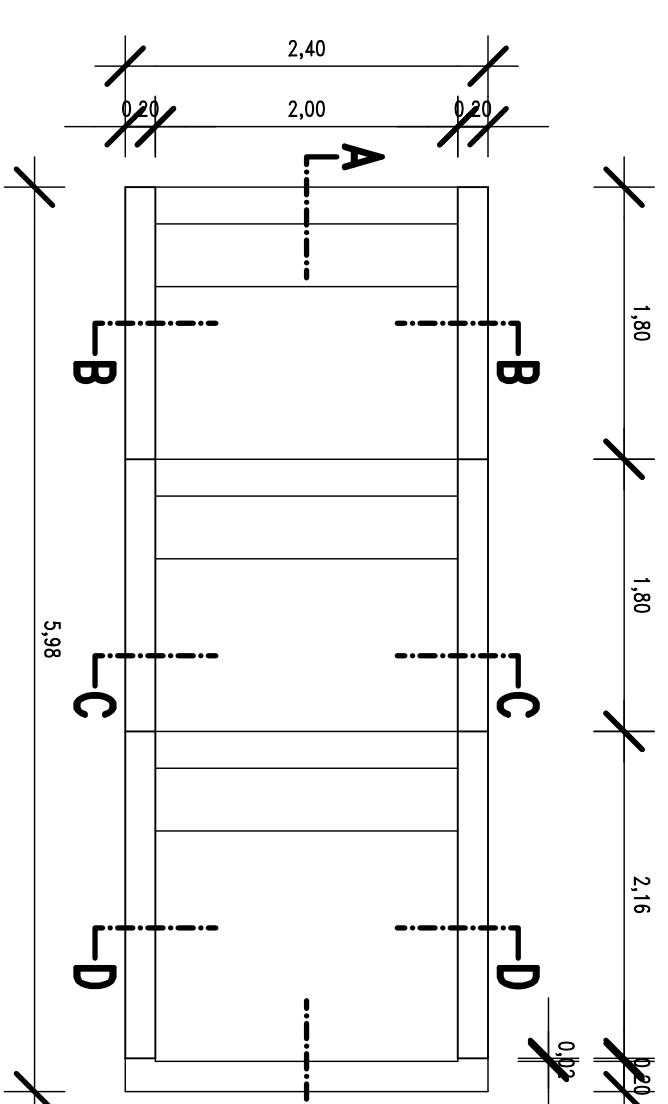
PROGETTISTI : R.T.P. ing

- mandatorio V.E.
- mandante S.B.
- mandante
- mandante
- mandante

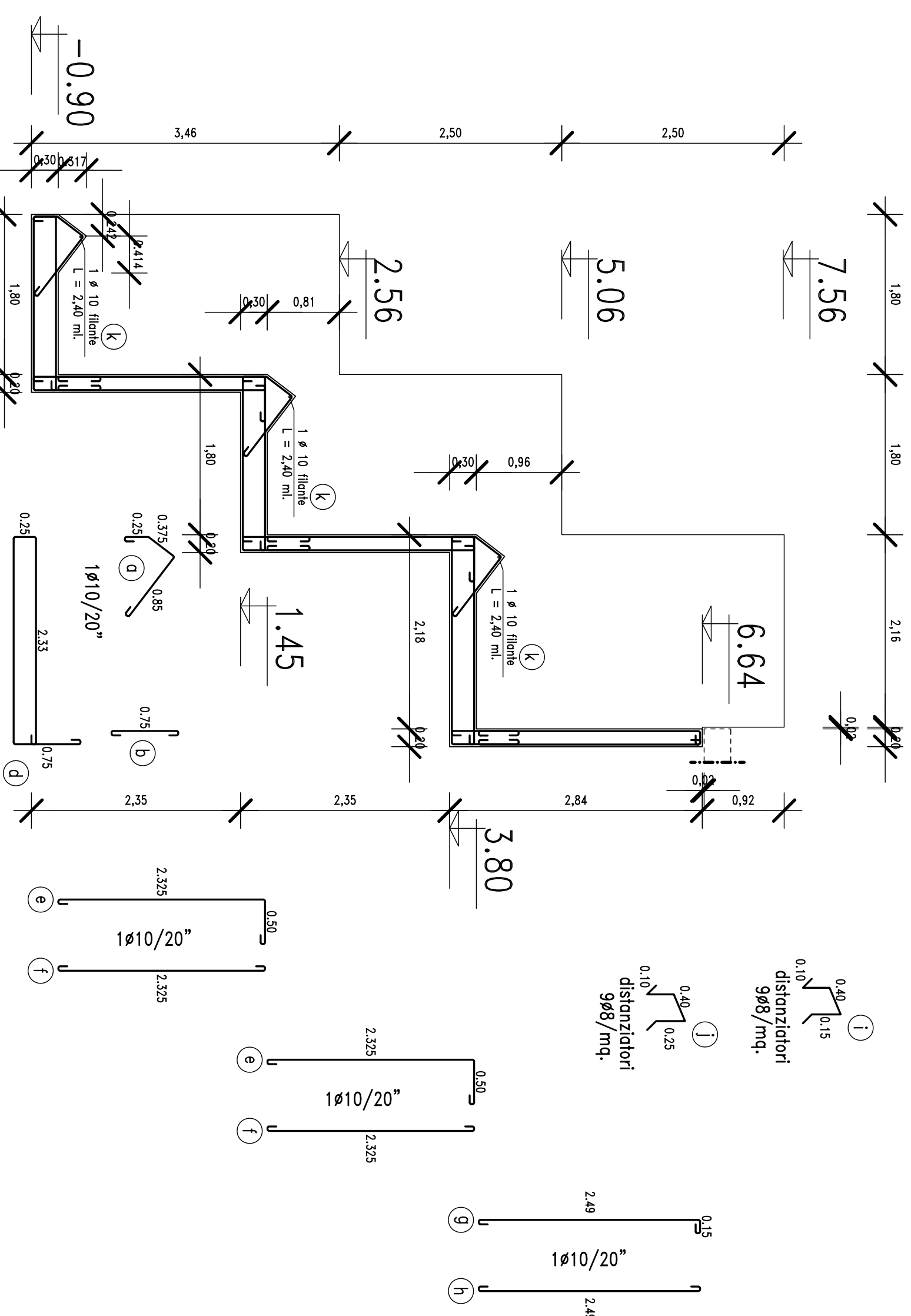
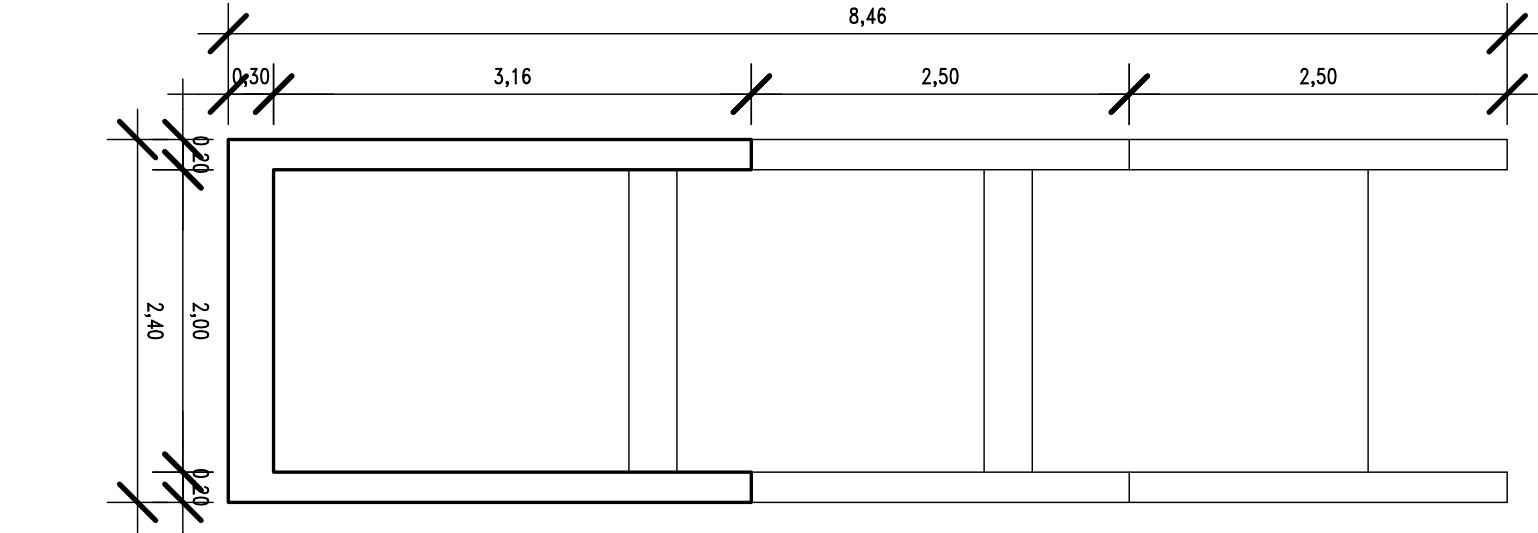
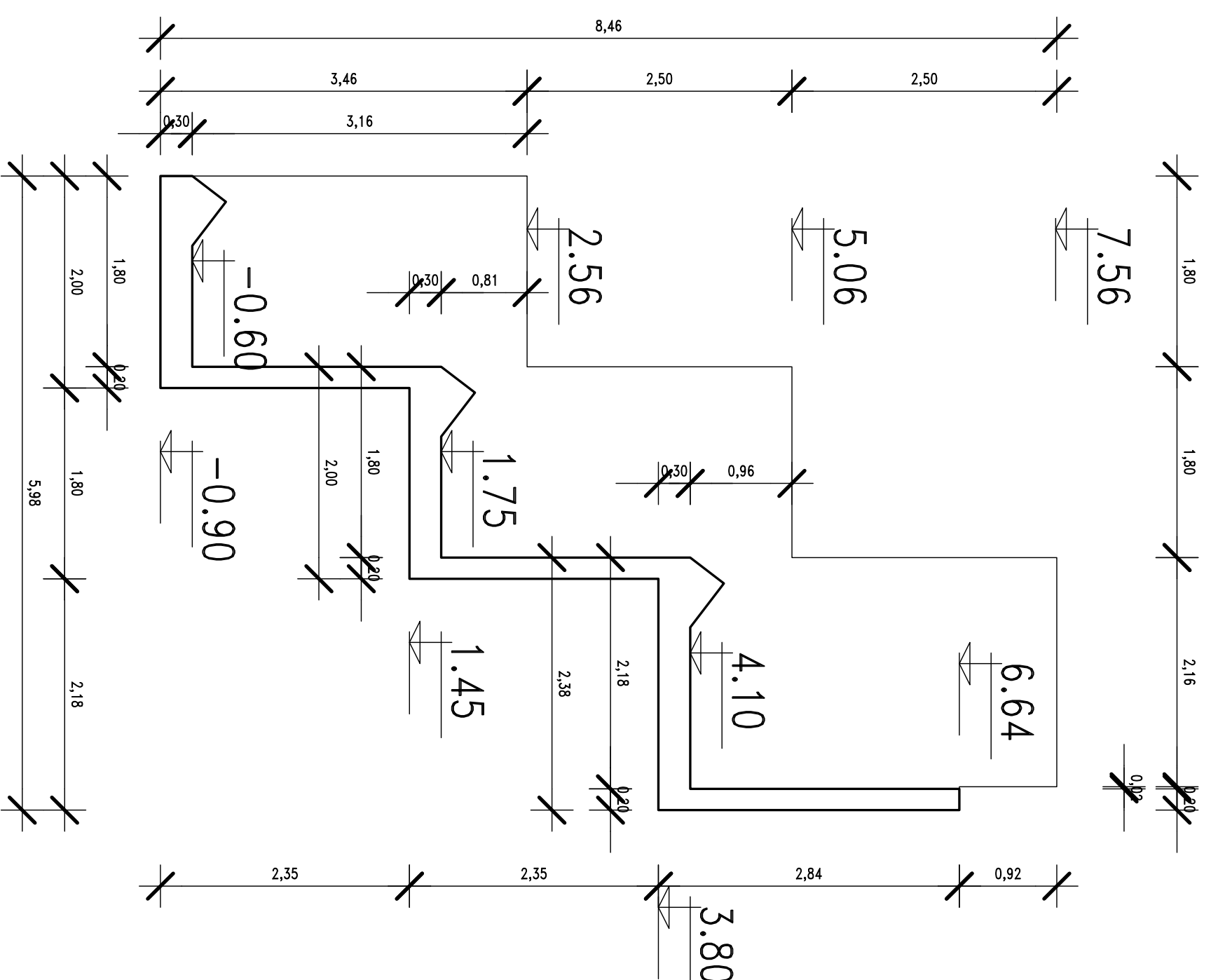
DATA	RECATTO	VERIFICATO	APPROVATO	DESCRIZIONE

Cod. Libero	Rivestimento	N° Fogli	Fermato

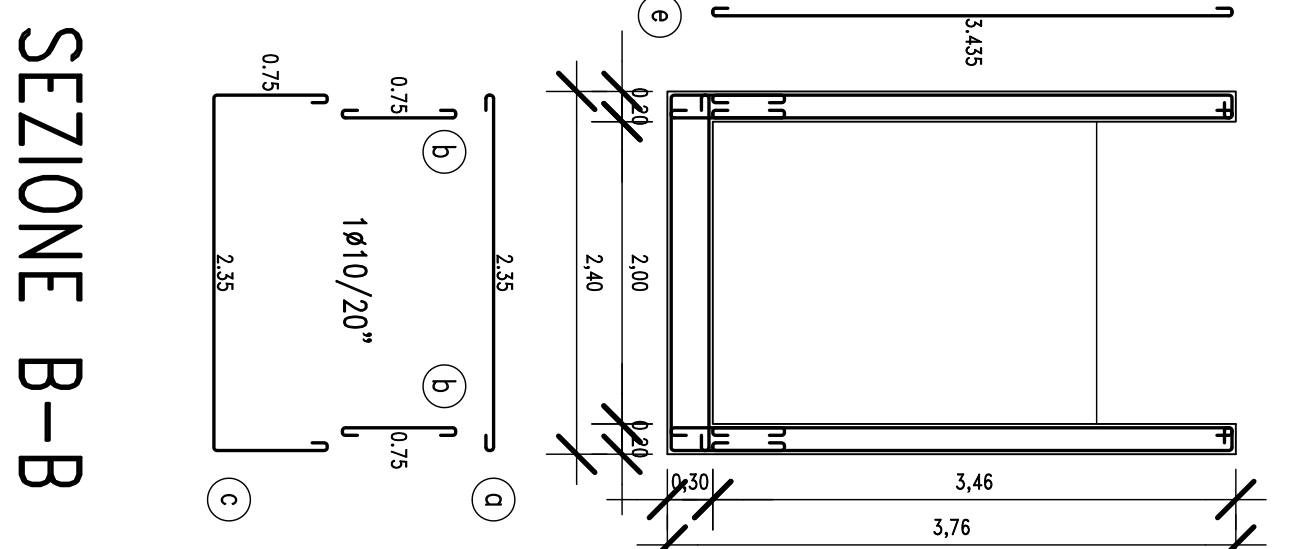
85100 - POTENZA - via Bertrazzoni, 36 - Tel./Fax 0971 410672 - email: ro



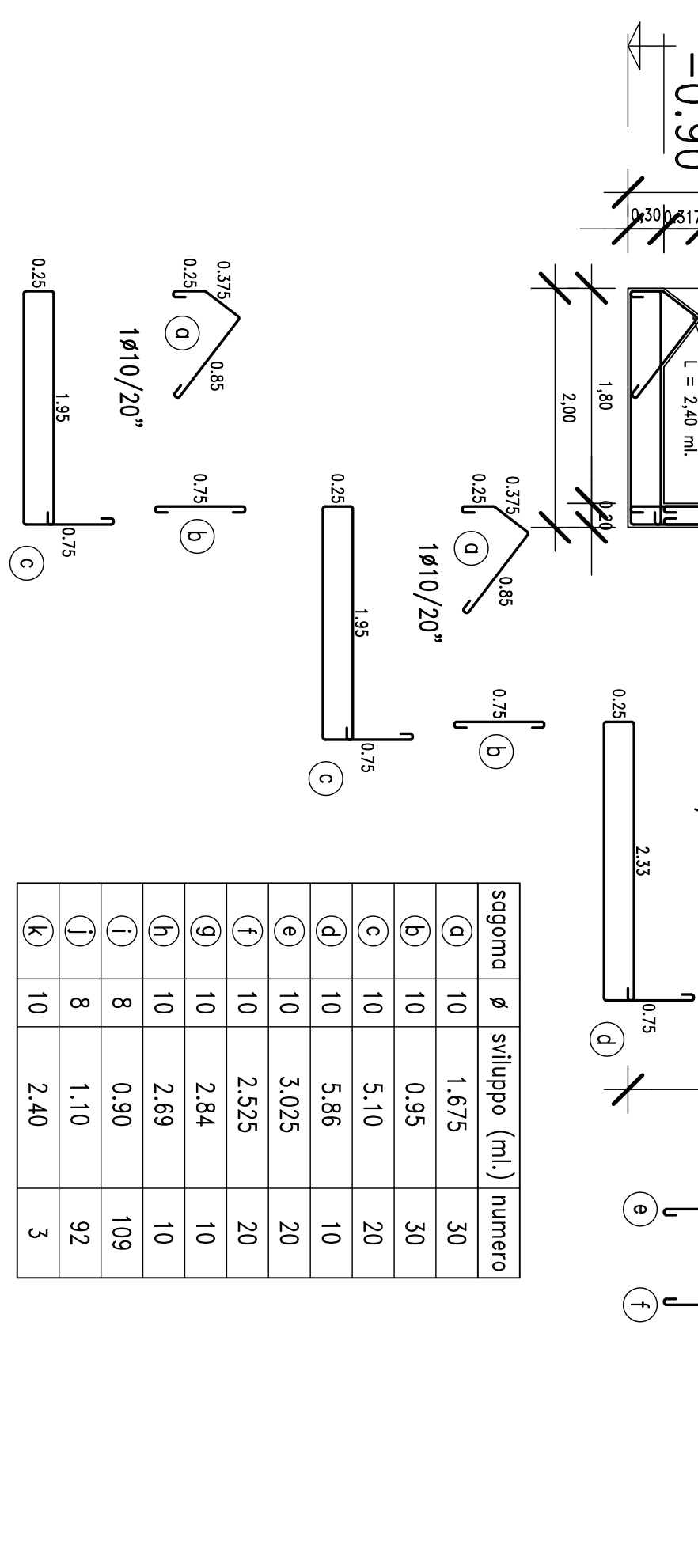
PIANTA



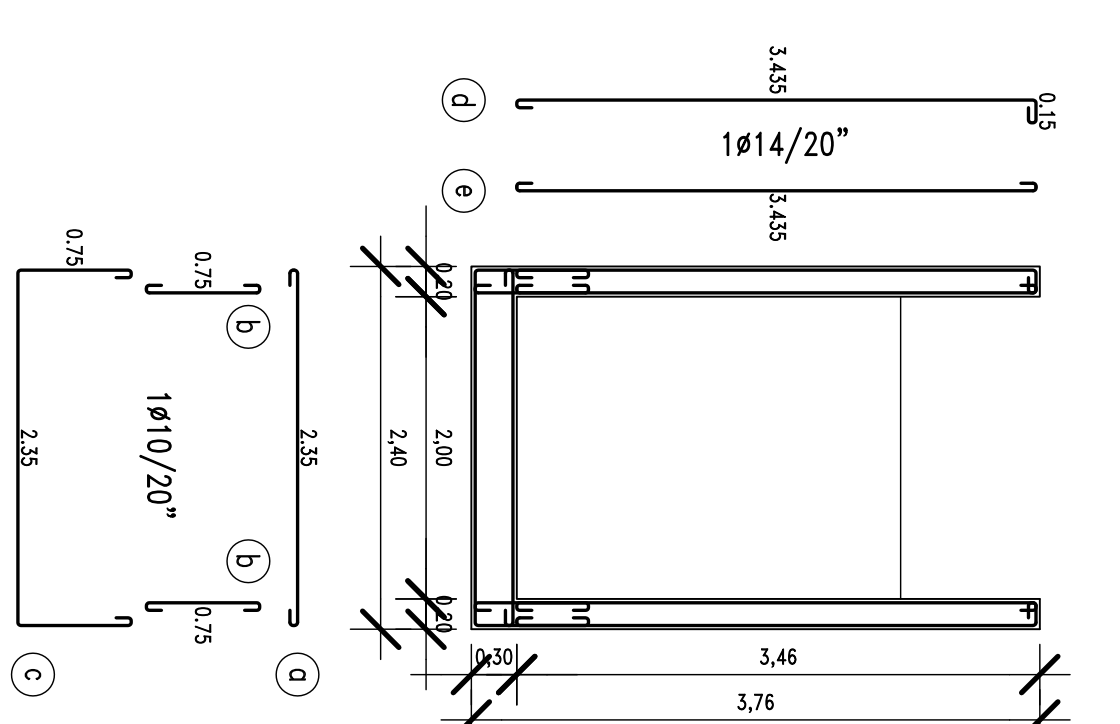
SEZIONE A-A



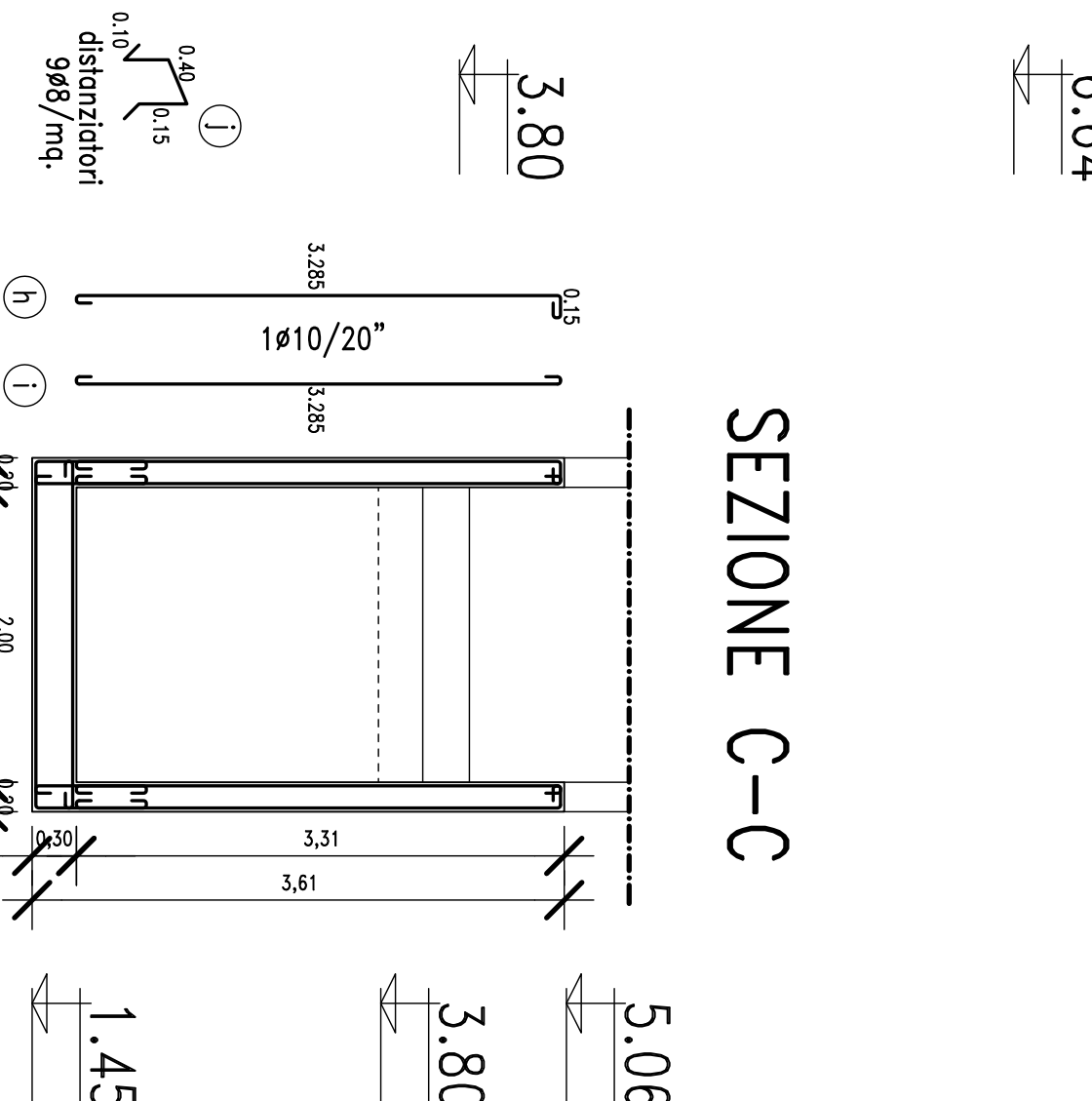
SEZIONE D-D



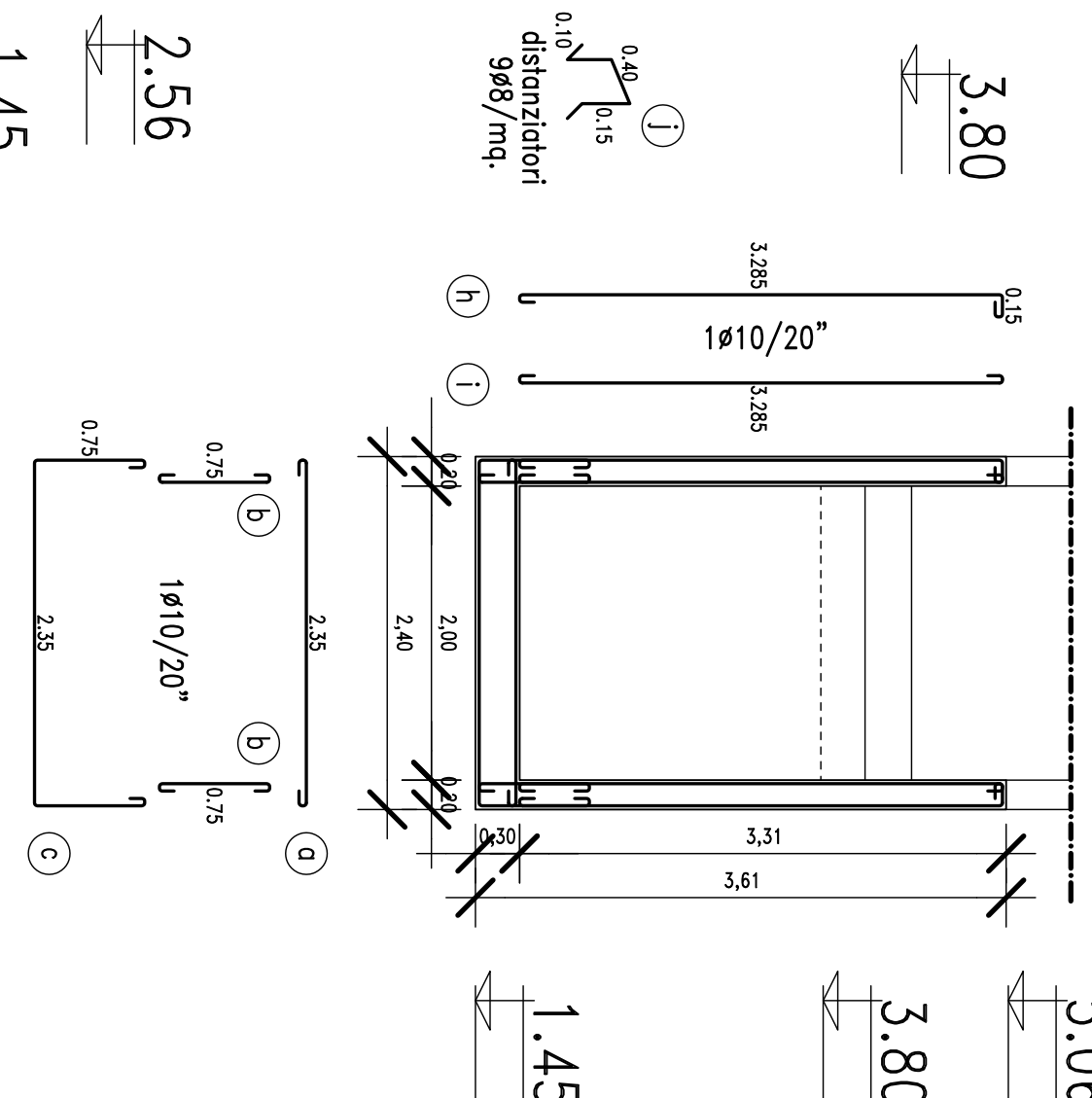
sgommo	ϕ	stivuppo (m)	numeri
(a)	10	1,675	30
(b)	10	0,95	30
(c)	10	5,10	20
(d)	10	5,86	10
(e)	10	3,075	20
(f)	10	2,525	20
(g)	10	2,84	10
(h)	10	2,99	10
(i)	8	0,90	109
(j)	8	1,10	92
(k)	10	2,40	3



SEZIONE D-D

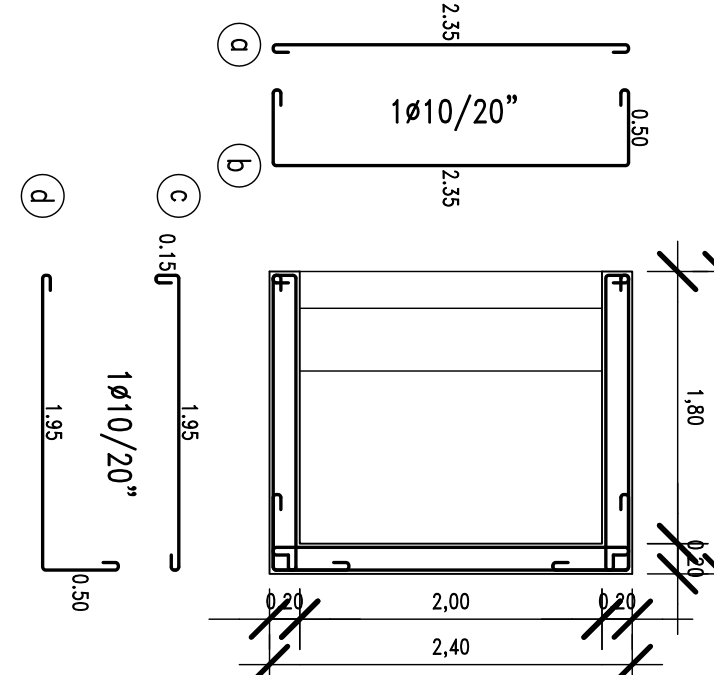


SEZIONE C-C

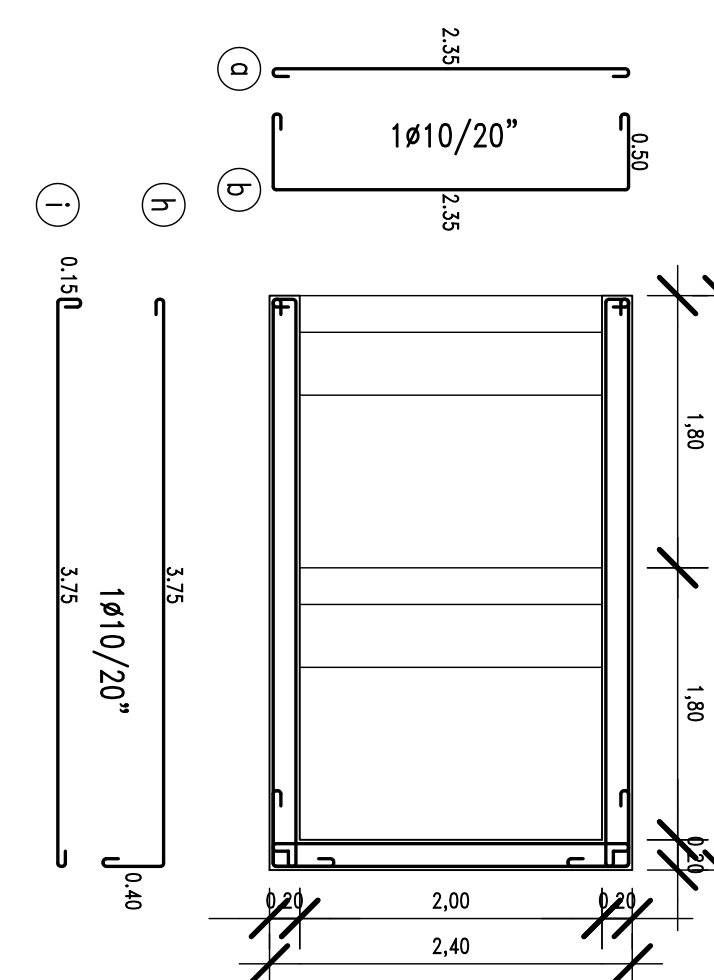


SEZIONE B-B

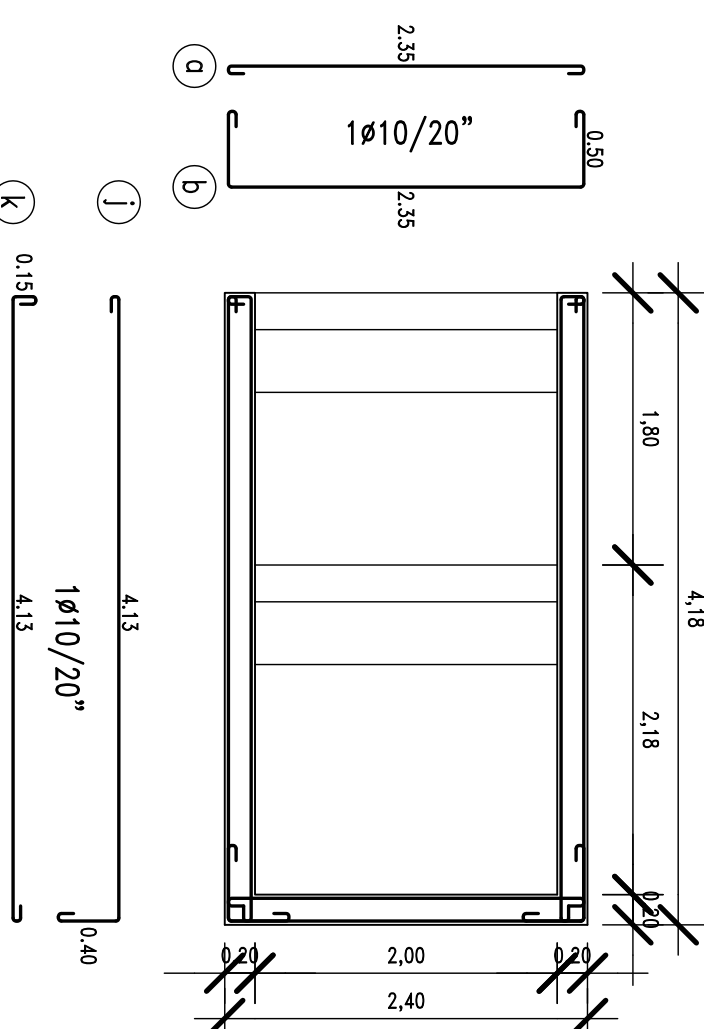
sogorno	ϕ	stalluppo (m ³)	numero
(a)	10	2.45	29
(b)	10	0.95	58
(c)	10	4.05	58
(d)	10	3.785	22
(e)	10	3.635	22
(f)	10	3.485	18
(g)	10	3.335	18
(h)	10	3.635	18
(i)	10	3.485	18
(j)	8	0.90	229



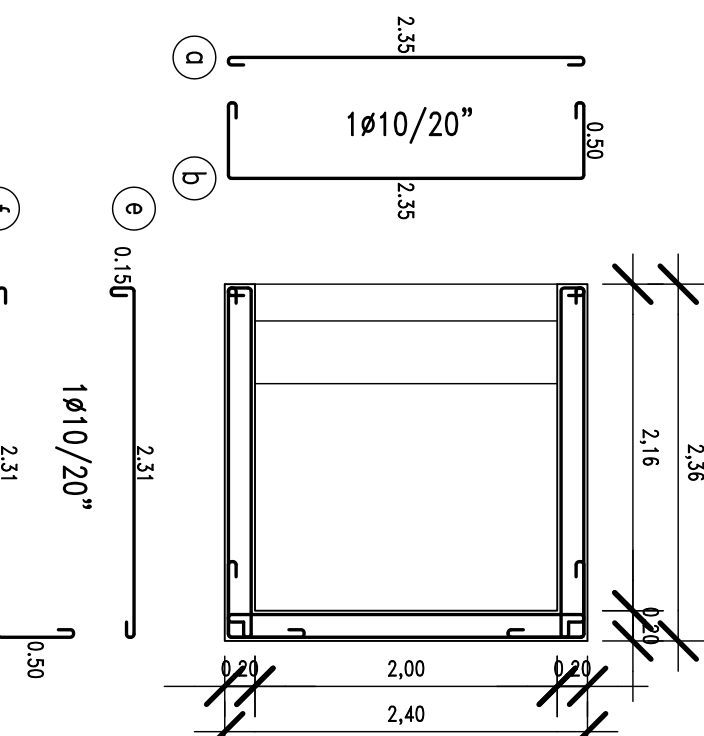
ARMATURA ORIZZONTALE da quota -0.60 a quota +1.73
da quota +2.56 a quota +4.10



ARMATURA ORIZZONTALE da quota +1.75 a quota +2.56

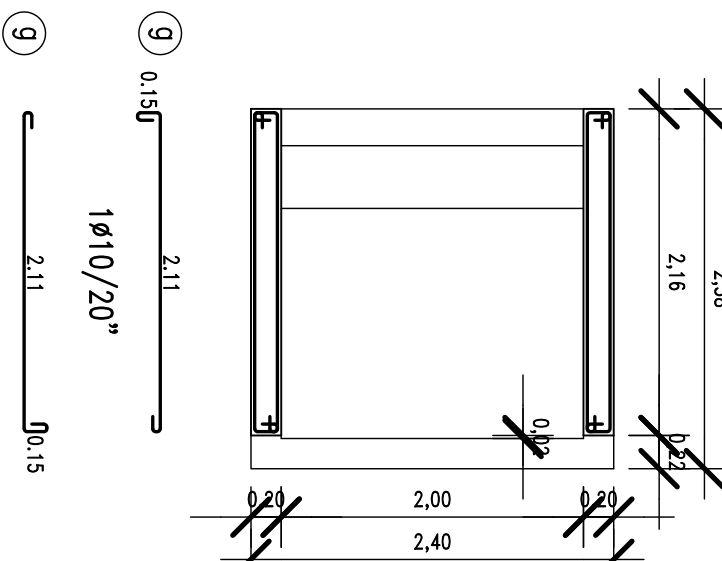


ARMATURA ORIZZONTALE da quota +4.10 a quota +5.06



ARMATURA ORIZZONTALE da quota +5.06 a quota +6.64

ARMATURA ORIZZONTALE da quota +6.64 a quota +7.56



ARMATURA ORIZZONTALE da quota +6.64 a quota +7.56

sogorno	Ø	sviluppo (m ²)	numero
(a)	10	2,55	38
(b)	10	3,55	38
(c)	10	2,30	42
(d)	10	2,65	42
(e)	10	2,66	16
(f)	10	3,01	16
(g)	10	2,46	20
(h)	10	4,35	8
(i)	10	4,10	8
(j)	10	4,73	10
(k)	10	4,48	10